

Identifying the Elements of A Plot Diagram

Student Notes

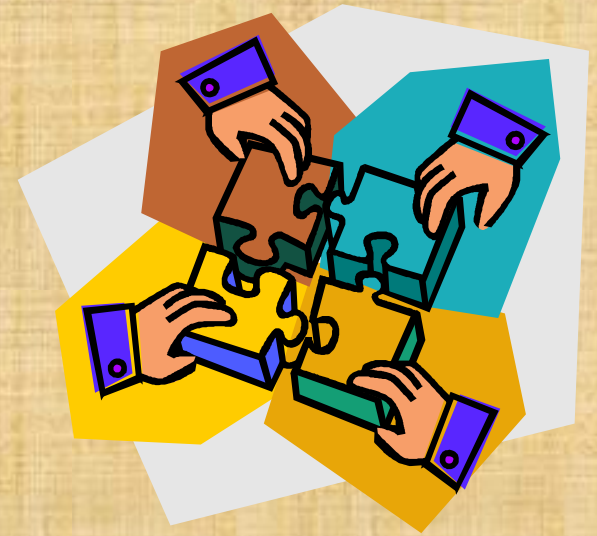


Plot Diagram



Plot (definition)

- **Plot is the organized pattern or sequence of events that make up a story. Every plot is made up of a series of incidents that are related to one another.**



1. Exposition

- This usually occurs at the beginning of a short story. Here the characters are introduced. We also learn about the setting of the story. Most importantly, we are introduced to the main conflict (main problem).



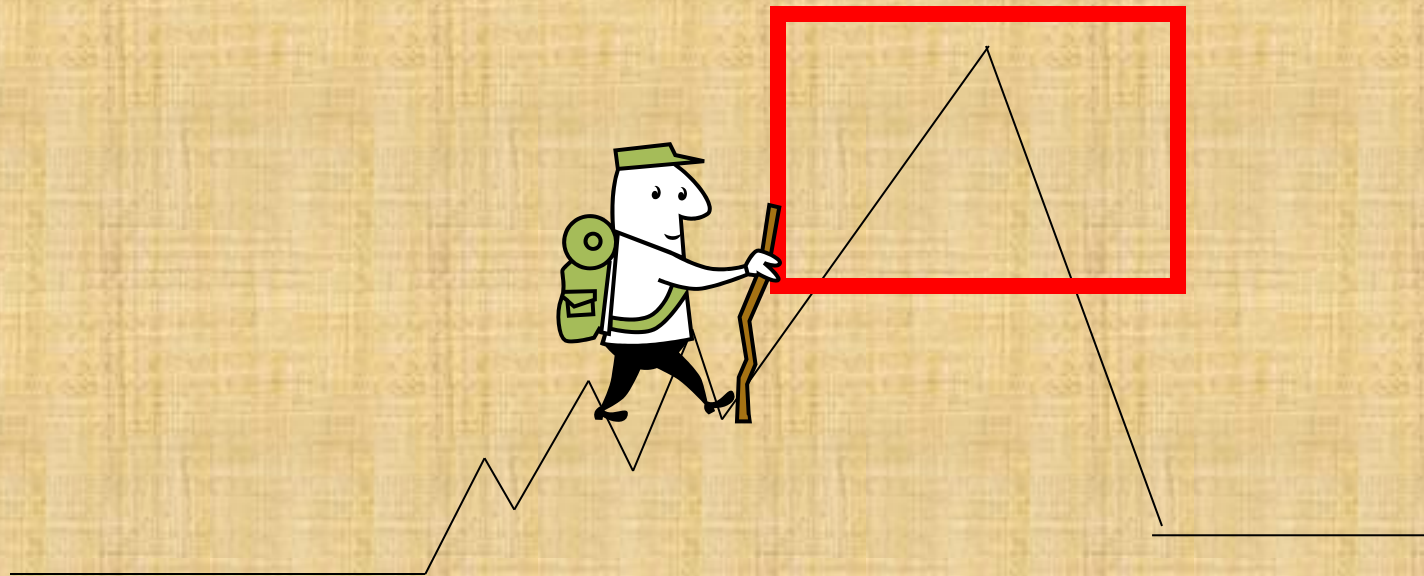
2. Rising Action

- This part of the story begins to develop the conflict(s). A building of interest or suspense occurs.



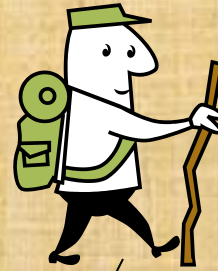
3. Climax

- This is the turning point of the story. Usually the main character comes face to face with a conflict. The main character will change in some way.



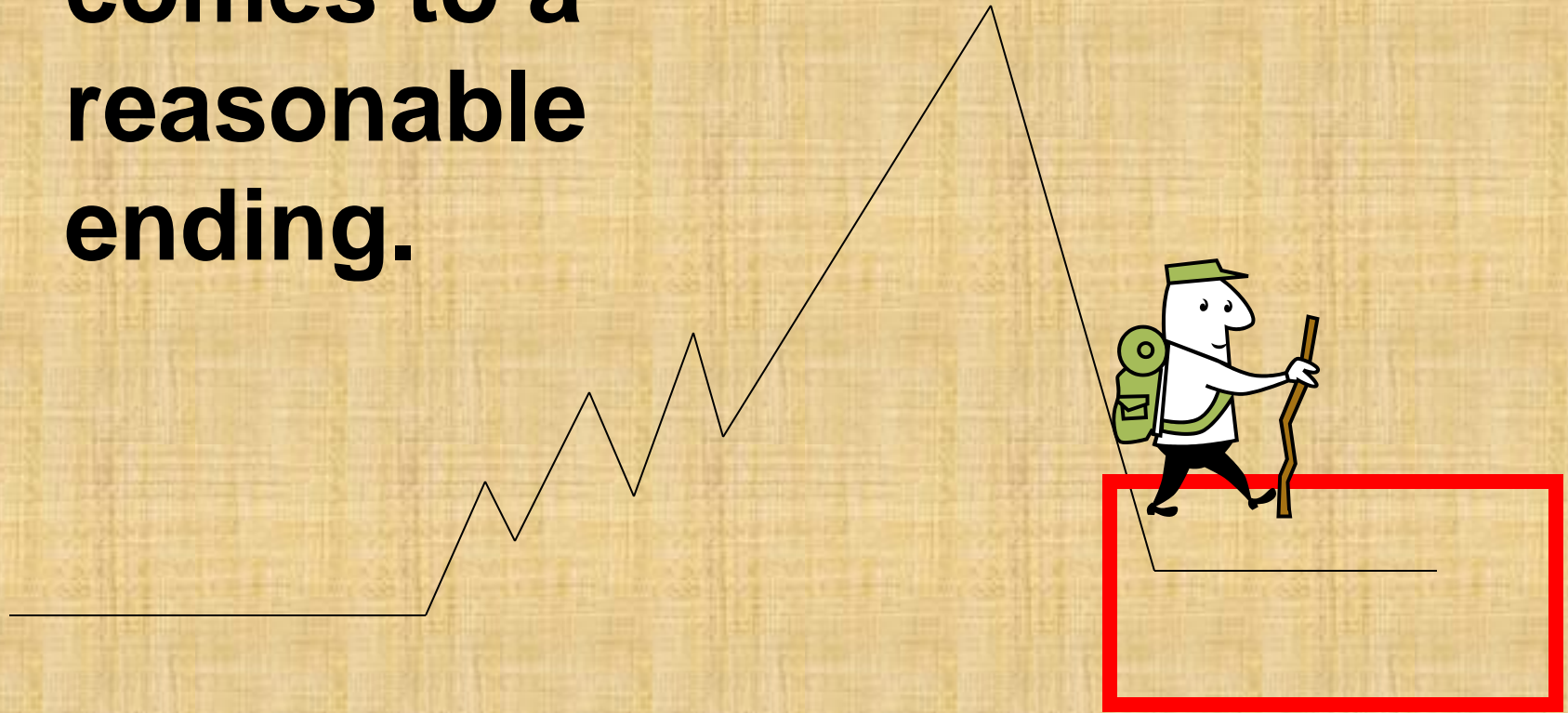
4. Falling Action

- All loose ends of the plot are tied up. The conflict(s) and climax are taken care of.



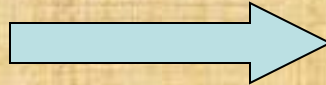
5. Resolution

- The story comes to a reasonable ending.



Putting It All Together

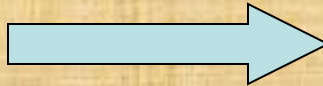
1. Exposition



**Beginning of
Story**

2. Rising Action

3. Climax



Middle of Story

4. Falling Action

5. Resolution



End of Story